

Bearing Roller Guide <Plastic Flange> -BLUE-

ELDON
SPECIALTIES, INC.

PO Box 567 * 821 E. Parker St. Ext.
Graham, NC 27253 * USA
(336) 229-6622 * Fax (336) 229-7180
sales@eldonspecialties.com
www.eldonspecialties.com

1. Very smooth yarn path with Diamond Polished Alumina ceramic.
2. Various ID are available with extra cost as optional (please see below details)

N912018
YM99C-DPA/PBT

2.3g
ID= ϕ 3.0
683ZZ

N912019
YM99C-DPA/PBT

6.4g
ID= ϕ 4.0
(option ϕ 5.0)
694ZZ

A208004
YM99C-DPA/PBT

5.6g
ID= ϕ 3.0
683ZZ

B605050
YM99C-DPA/PBT

6.8g
ID= ϕ 4.0
(option ϕ 5.0)
694ZZ

A208005
YM99C-DPA/PBT

12g
ID= ϕ 4.0
(option ϕ 5.0)
694ZZ

A502080
YM99C-DPA/PBT

24g
ID= ϕ 6.0
(option ϕ 5, 7, 8)
626ZZ

A504025
YM99C-DPA/PBT

41g
ID= ϕ 8.0
(option ϕ 7.0)
608ZZ

A312030
YM99C-DPA/PBT

35g
ID= ϕ 6.0
(option ϕ 5, 7, 8)
626ZZ

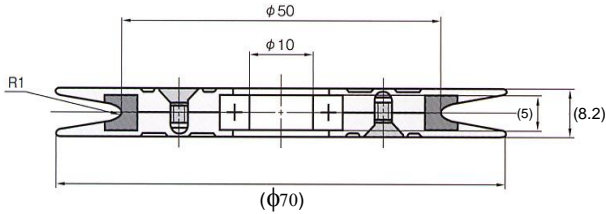
*The dimensions in () are nominal values.

Bearing Roller Guide <Plastic Flange> -BLUE-

ELDON
SPECIALTIES, INC.

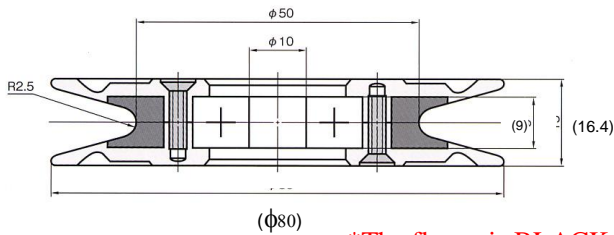
PO Box 567 * 821 E. Parker St. Ext.
Graham, NC 27253 * USA
(336) 229-6622 * Fax (336) 229-7180
sales@eldonspecialties.com
www.eldonspecialties.com

1. Very smooth yarn path with YM99C-DPA (Diamond Polished Alumina ceramic YM99C)*
*YM92CW-DPA is used for A811020
2. Various ID are available with extra cost as optional (please see below details)



A609020
YM99C-DPA/PA

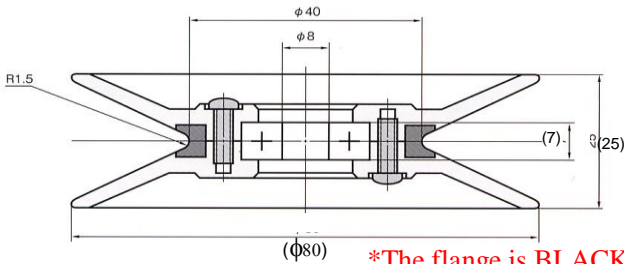
34g
ID= φ10.0
6800ZZS01



A701050
YM99C-DPA/PA

95g
ID= φ10.0
6200ZZ05

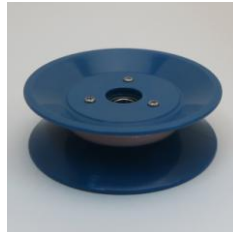
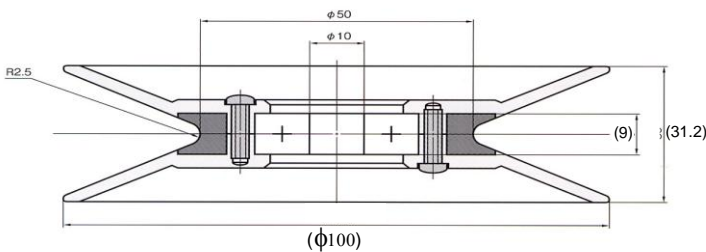
*The flange is BLACK at this moment.



A409001
YM99C-DPA/PA

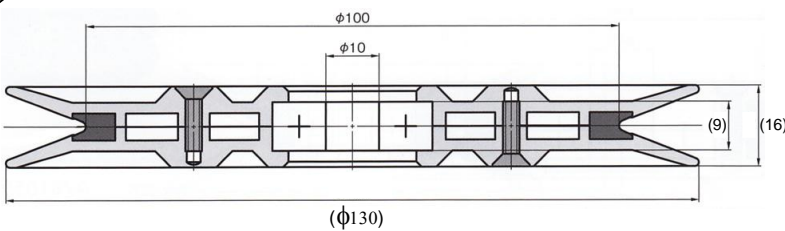
58g
ID= φ8.0
(option φ7.0)
608ZZ

*The flange is BLACK at this moment.



A701060
YM99C-DPA/PA

125g
ID= φ10.0
6200ZZ05



A811020
YM92CW-DPA/PA

158g
ID= φ10.0
6200ZZ05

*This item is BLACK flange only.

*The dimensions in () are nominal values.