

# OILING GUIDE

# 9



**ELDON SPECIALTIES, INC.**  
P.O.Box 567/821 E.PARKER STREET EXT.  
GRAHAM, NC 27253 USA  
Tel(336)229-6622 Fax(336)229-7180  
E-Mail: sales@eldonspecialties.com  
Website: www.eldonspecialties.com

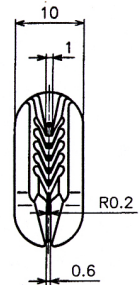
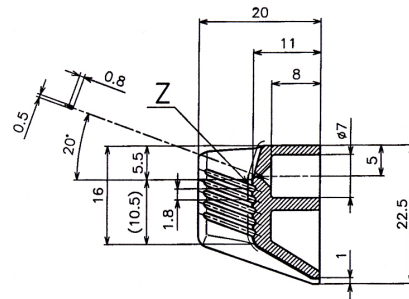
## NEW OILING GUIDE FOR MULTI-FILAMENT AND HIGH SPEED YARN

*\*The design is combination  
of **Oiling Roller** and **Oiling  
Nozzle**, which provides  
ideal oiling.*

*\*For **Multi-filaments** or **High  
Speed Yarn** application  
where there is **OIL  
SPLASH** Problem. Also  
recommendable for **CIQ**  
(**Circular Inflow Quench**)  
process.*

**D003038-4**

**YM99C-HF2**

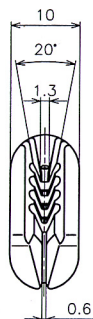
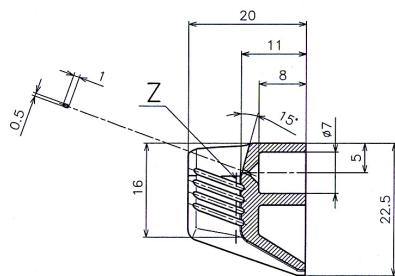
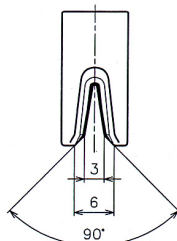


**ORIFICE SIZE: 0.8 x 0.5mm**

**For ~ 150dtx YARN**

**C808080-4**

**YM99C-HF2**

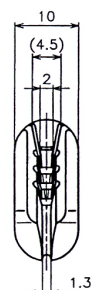
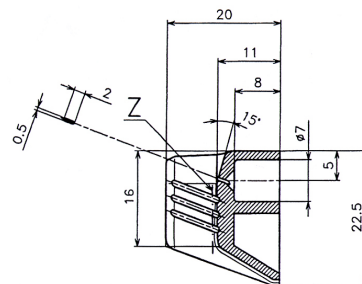
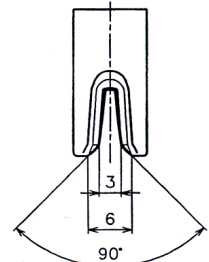


**ORIFICE SIZE: 1.0 x 0.5mm**

**For 50~ 500dtx YARN**

**C704022-4**

**YM99C-HF2**



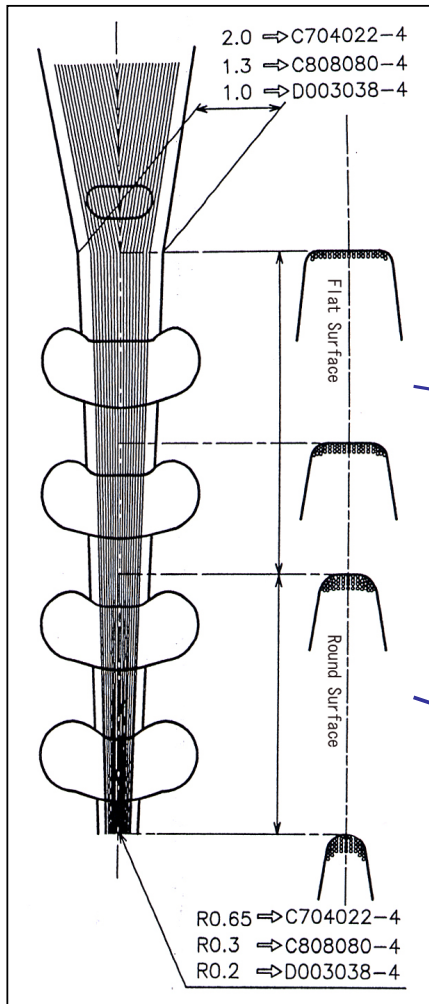
**ORIFICE SIZE: 2.0 x 0.5mm**

**For 150 ~ 1000dtx YARN**



**ELDON SPECIALTIES, INC.**  
P.O.Box 567/821 E.PARKER STREET EXT.  
GRAHAM, NC 27253 USA  
Tel(336)229-6622 Fax(336)229-7180  
E-Mail: sales@eldonspecialties.com  
Website: www.eldonspecialties.com

## \*YARN PASSAGE IMAGE



*\*The design is combination of **Oiling Roller** and **Oiling Nozzle**, which provides ideal oiling.*

*\*The left drawing provides the image of yarn status of each area.*

### **FLAT SURFACE**

*The Yarns spread in this area*



*Each yarn can pick up the oil  
Uniformed oiling is possible.*

### **ROUND SURFACE**

*The Yarns get gathered and bundle in this area*

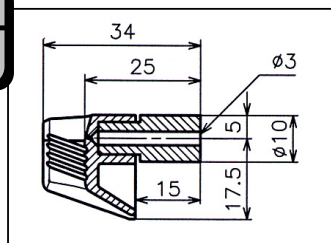


*Fix the oil to the yarn which could not pick up oil at Flat surface  
Makes good form and condition for next step*

*\*With SUS HOLDER types for Barmag etc.*

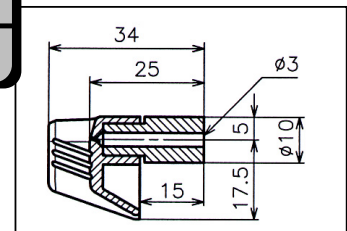
**C905021**  
**YM99C-HF2/SUS**

GUIDE: C808080-4



**C905020**  
**YM99C-HF2/SUS**

GUIDE: C704022-4



*Other holders are also available upon customers' request*