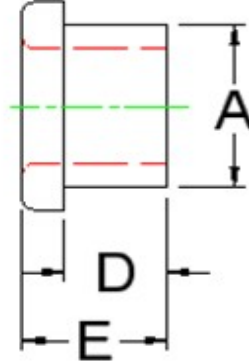
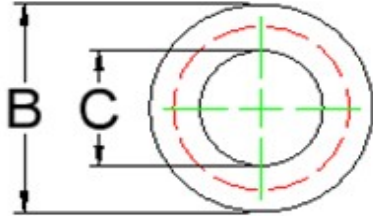


CERAMIC DIMENSIONS SHEET

ELDON
SPECIALTIES, INC.

PO Box 567 * 821 E. Parker St. Ext.
Graham, NC 27253 * USA
(336) 229-6622 * Fax (336) 229-7180
sales@eldonspecialties.com
www.eldonspecialties.com



Straight Shouldered Ceramic Eyelets (Flange on one side)

PLEASE NOTE: Measurements may vary slightly due to ceramic shrinkage during the firing process.

| PART # | A | | B | | C | | D | | E | |
|------------|-------------|-----------|-----------|--------------|--------------|-----|-------|------|-------|-----|
| | OD of shaft | Flange OD | Center ID | Shaft length | Total length | IN | MM | IN | MM | |
| A-284-AW-2 | 0.079 | 2.0 | 0.122 | 3.1 | 0.039 | 1.0 | 0.047 | 1.2 | 0.083 | 2.1 |
| A-284-AR | 0.079 | 2.0 | 0.126 | 3.2 | 0.039 | 1.0 | 0.079 | 2.0 | 0.118 | 3.0 |
| A-285-TC | 0.079 | 2.0 | 0.122 | 3.1 | 0.039 | 1.0 | 0.150 | 3.8 | 0.217 | 5.0 |
| A-154-AP | 0.087 | 2.2 | 0.126 | 3.2 | 0.047 | 1.2 | 0.197 | 5.0 | 0.228 | 5.8 |
| A-181-AR | 0.098 | 2.5 | 0.138 | 3.5 | 0.059 | 1.5 | 0.059 | 1.5 | 0.098 | 2.5 |
| A-153-AP | 0.110 | 2.8 | 0.177 | 4.5 | 0.039 | 1.0 | 0.079 | 2.0 | 0.118 | 3.0 |
| A-060-AR | 0.118 | 3.0 | 0.197 | 5.0 | 0.059 | 1.5 | 0.118 | 3.0 | 0.158 | 4.0 |
| A-161-AR | 0.118 | 3.0 | 0.157 | 4.0 | 0.063 | 1.6 | 0.197 | 5.0 | 0.217 | 5.5 |
| A-177-AR | 0.118 | 3.0 | 0.157 | 4.0 | 0.079 | 2.0 | 0.197 | 5.0 | 0.217 | 5.5 |
| A-026-AP | 0.127 | 3.2 | 0.222 | 5.6 | 0.063 | 1.6 | 0.138 | 3.50 | 0.186 | 4.7 |
| A-087-AR | 0.138 | 3.5 | 0.177 | 4.5 | 0.098 | 2.5 | 0.098 | 2.5 | 0.138 | 3.5 |
| A-055-AR | 0.150 | 3.8 | 0.197 | 5.0 | 0.059 | 1.5 | 0.118 | 3.0 | 0.158 | 4.0 |
| A-059-AP | 0.150 | 3.8 | 0.236 | 6.0 | 0.071 | 1.8 | 0.098 | 2.5 | 0.138 | 3.5 |
| A-011-TC | 0.150 | 3.8 | 0.276 | 7.0 | 0.079 | 2.0 | 0.098 | 2.5 | 0.157 | 4.0 |
| A-010-T | 0.150 | 3.8 | 0.185 | 4.7 | 0.077 | 2.0 | 0.197 | 5.0 | 0.260 | 6.6 |
| A-192-AP | 0.150 | 3.8 | 0.169 | 4.3 | 0.118 | 3.0 | 0.079 | 2.0 | 0.095 | 2.4 |
| A-017-AP/2 | 0.154 | 3.9 | 0.216 | 5.5 | 0.055 | 1.4 | 0.118 | 3.0 | 0.177 | 4.5 |
| A-017-AP/1 | 0.156 | 4.0 | 0.219 | 5.6 | 0.070 | 1.8 | 0.125 | 3.2 | 0.157 | 4.0 |
| A-114-AR | 0.158 | 4.0 | 0.217 | 5.5 | 0.079 | 2.0 | 0.079 | 2.0 | 0.118 | 3.0 |
| A-183-AR | 0.158 | 4.0 | 0.236 | 6.0 | 0.079 | 2.0 | 0.177 | 4.5 | 0.217 | 5.5 |
| A-100-TBR | 0.157 | 4.0 | 0.216 | 5.5 | 0.098 | 2.5 | 0.177 | 4.5 | 0.209 | 5.3 |

CERAMIC DIMENSIONS SHEET

| | | | | | | | | | | |
|------------|-------|-----|-------|------|-------|-----|-------|------|-------|------|
| A-093-AP | 0.157 | 4.0 | 0.197 | 5.0 | 0.107 | 2.7 | 0.157 | 4.0 | 0.195 | 5.0 |
| A-083-AR | 0.165 | 4.2 | 0.197 | 5.0 | 0.118 | 3.0 | 0.079 | 2.0 | 0.098 | 2.5 |
| A-125-AW | 0.188 | 4.8 | 0.225 | 5.7 | 0.078 | 2.0 | 0.163 | 4.1 | 0.250 | 6.4 |
| A-262-AW | 0.193 | 4.9 | 0.262 | 6.7 | 0.078 | 2.0 | 0.083 | 2.1 | 0.150 | 3.8 |
| A-107-AR | 0.197 | 5.0 | 0.256 | 6.5 | 0.118 | 3.0 | 0.059 | 1.5 | 0.098 | 2.5 |
| A-065-AR | 0.197 | 5.0 | 0.256 | 6.5 | 0.118 | 3.0 | 0.098 | 2.5 | 0.138 | 3.5 |
| A-079-AR | 0.197 | 5.0 | 0.256 | 6.5 | 0.118 | 3.0 | 0.118 | 3.0 | 0.158 | 4.0 |
| A-075-AP | 0.197 | 5.0 | 0.262 | 6.7 | 0.118 | 3.0 | 0.118 | 3.0 | 0.157 | 4.0 |
| A-113-AR | 0.197 | 5.0 | 0.256 | 6.5 | 0.138 | 3.5 | 0.098 | 2.5 | 0.158 | 4.0 |
| A-255-TC | 0.201 | 5.1 | 0.280 | 7.1 | 0.087 | 2.2 | 0.126 | 3.2 | 0.185 | 4.7 |
| A-078-AP | 0.201 | 5.1 | 0.268 | 6.8 | 0.130 | 3.3 | 0.158 | 4.0 | 0.217 | 5.5 |
| A-061-T | 0.205 | 5.2 | 0.284 | 7.2 | 0.126 | 3.2 | 0.162 | 4.1 | 0.201 | 5.1 |
| A-223-AP | 0.205 | 5.2 | 0.267 | 6.8 | 0.125 | 3.2 | 0.200 | 5.1 | 0.257 | 6.5 |
| A-176-AP | 0.221 | 5.6 | 0.315 | 8.0 | 0.098 | 2.5 | 0.158 | 4.0 | 0.221 | 5.6 |
| A-291-AP | 0.221 | 5.6 | 0.276 | 7.0 | 0.157 | 4.0 | 0.126 | 3.2 | 0.185 | 4.7 |
| A-197-TC | 0.232 | 5.9 | 0.307 | 7.8 | 0.134 | 3.4 | 0.157 | 4.0 | 0.236 | 6.0 |
| A-077-AR | 0.236 | 6.0 | 0.315 | 8.0 | 0.118 | 3.0 | 0.158 | 4.0 | 0.236 | 6.0 |
| A-241-AR | 0.236 | 6.0 | 0.394 | 10.0 | 0.118 | 3.0 | 0.217 | 5.5 | 0.354 | 9.0 |
| A-108-AR | 0.236 | 6.0 | 0.315 | 8.0 | 0.118 | 3.0 | 0.236 | 6.0 | 0.315 | 8.0 |
| A-235-AW | 0.236 | 6.0 | 0.307 | 7.8 | 0.134 | 3.4 | 0.079 | 2.0 | 0.118 | 3.0 |
| A-089-AP | 0.235 | 6.0 | 0.307 | 7.8 | 0.134 | 3.4 | 0.197 | 5.0 | 0.256 | 6.5 |
| A-076-AP-1 | 0.235 | 6.0 | 0.315 | 8.0 | 0.157 | 4.0 | 0.118 | 3.0 | 0.157 | 4.0 |
| A-076-AR | 0.236 | 6.0 | 0.354 | 9.0 | 0.157 | 4.0 | 0.118 | 3.0 | 0.197 | 5.0 |
| A-089-AP-2 | 0.235 | 6.0 | 0.276 | 7.0 | 0.157 | 4.0 | 0.197 | 5.0 | 0.276 | 7.0 |
| A-224-TC | 0.236 | 6.0 | 0.335 | 8.5 | 0.161 | 4.1 | 0.256 | 6.5 | 0.315 | 8.0 |
| A-196-AP | 0.240 | 6.1 | 0.402 | 10.2 | 0.161 | 4.1 | 0.307 | 7.8 | 0.386 | 9.8 |
| A-071-AP | 0.244 | 6.2 | 0.311 | 7.9 | 0.110 | 2.8 | 0.158 | 4.0 | 0.228 | 5.8 |
| A-279-AW | 0.248 | 6.3 | 0.315 | 8.0 | 0.130 | 3.3 | 0.071 | 1.8 | 0.110 | 2.8 |
| A-193-AP | 0.248 | 6.3 | 0.315 | 8.0 | 0.138 | 3.5 | 0.138 | 3.5 | 0.177 | 4.5 |
| A-234-AP | 0.252 | 6.4 | 0.343 | 8.7 | 0.157 | 4.0 | 0.264 | 6.7 | 0.331 | 8.4 |
| A-034-TC | 0.264 | 6.7 | 0.347 | 8.8 | 0.150 | 3.8 | 0.236 | 6.0 | 0.295 | 7.5 |
| A-253-AP | 0.272 | 6.9 | 0.394 | 10.0 | 0.157 | 4.0 | 0.276 | 7.0 | 0.354 | 9.0 |
| A-290-AP | 0.272 | 6.9 | 0.354 | 9.0 | 0.189 | 4.8 | 0.453 | 11.5 | 0.512 | 13.0 |
| A-095-AP | 0.276 | 7.0 | 0.362 | 9.2 | 0.177 | 4.5 | 0.209 | 5.3 | 0.276 | 7.0 |
| A-172-AR | 0.276 | 7.0 | 0.315 | 8.0 | 0.197 | 5.0 | 0.079 | 2.0 | 0.118 | 3.0 |
| A-191-AP | 0.285 | 7.2 | 0.346 | 8.8 | 0.134 | 3.4 | 0.276 | 7.0 | 0.327 | 8.3 |
| A-013-T | 0.287 | 7.3 | 0.408 | 10.4 | 0.185 | 4.7 | 0.077 | 2.0 | 0.123 | 3.1 |
| A-265-T | 0.291 | 7.4 | 0.394 | 10.0 | 0.138 | 3.5 | 0.078 | 2.0 | 0.138 | 3.5 |
| A-180-AP-2 | 0.291 | 7.4 | 0.394 | 10.0 | 0.205 | 5.2 | 0.354 | 9.0 | 0.512 | 13.0 |
| A-116-AR | 0.295 | 7.5 | 0.394 | 10.0 | 0.079 | 2.0 | 0.236 | 6.0 | 0.315 | 8.0 |
| A-208-AR | 0.295 | 7.5 | 0.394 | 10.0 | 0.118 | 3.0 | 0.236 | 6.0 | 0.315 | 8.0 |
| A-070-AR | 0.295 | 7.5 | 0.394 | 10.0 | 0.158 | 4.0 | 0.236 | 6.0 | 0.315 | 8.0 |
| A-199-AP | 0.295 | 7.5 | 0.393 | 10.0 | 0.157 | 4.0 | 0.236 | 6.0 | 0.314 | 8.0 |
| A-122-TC-1 | 0.294 | 7.5 | 0.382 | 9.7 | 0.177 | 4.5 | 0.196 | 5.0 | 0.275 | 7.0 |
| A-180-AP | 0.295 | 7.5 | 0.421 | 10.7 | 0.189 | 4.8 | 0.276 | 7.0 | 0.346 | 8.8 |
| A-179-AR | 0.295 | 7.5 | 0.394 | 10.0 | 0.197 | 5.0 | 0.079 | 2.0 | 0.118 | 3.0 |
| A-082-AR | 0.295 | 7.5 | 0.394 | 10.0 | 0.197 | 5.0 | 0.118 | 3.0 | 0.197 | 5.0 |
| A-174-AR | 0.295 | 7.5 | 0.394 | 10.0 | 0.197 | 5.0 | 0.236 | 6.0 | 0.315 | 8.0 |
| A-194-AR | 0.295 | 7.5 | 0.394 | 10.0 | 0.197 | 5.0 | 0.709 | 18.0 | 0.787 | 20.0 |
| A-082-AP | 0.297 | 7.5 | 0.394 | 10.0 | 0.213 | 5.4 | 0.118 | 3.0 | 0.197 | 5.0 |

CERAMIC DIMENSIONS SHEET

| | | | | | | | | | | |
|------------|-------|------|-------|------|-------|------|-------|------|-------|------|
| A-198-AP | 0.299 | 7.6 | 0.374 | 9.5 | 0.178 | 4.5 | 0.354 | 9.0 | 0.432 | 11.0 |
| A-198-TC | 0.299 | 7.6 | 0.374 | 9.5 | 0.178 | 4.5 | 0.354 | 9.0 | 0.432 | 11.0 |
| A-178-TC | 0.299 | 7.6 | 0.417 | 10.6 | 0.189 | 4.8 | 0.157 | 4.0 | 0.197 | 5.0 |
| A-275-AP | 0.303 | 7.7 | 0.394 | 10.0 | 0.142 | 3.6 | 0.078 | 2.0 | 0.142 | 3.6 |
| A-264-T | 0.307 | 7.8 | 0.366 | 9.3 | 0.138 | 3.5 | 0.083 | 2.1 | 0.138 | 3.5 |
| A-213-AW | 0.307 | 7.8 | 0.480 | 12.2 | 0.158 | 4.0 | 0.291 | 7.4 | 0.492 | 12.5 |
| A-112-AP | 0.315 | 8.0 | 0.394 | 10.0 | 0.197 | 5.0 | 0.118 | 3.0 | 0.177 | 4.5 |
| A-112-AR | 0.315 | 8.0 | 0.433 | 11.0 | 0.236 | 6.0 | 0.118 | 3.0 | 0.197 | 5.0 |
| A-243-TC | 0.323 | 8.2 | 0.370 | 9.4 | 0.170 | 4.3 | 0.079 | 2.0 | 0.119 | 3.0 |
| A-286-AR | 0.323 | 8.2 | 0.429 | 10.9 | 0.197 | 5.0 | 0.313 | 8.0 | 0.394 | 10.0 |
| A-175-AR | 0.323 | 8.2 | 0.472 | 12.0 | 0.217 | 5.5 | 0.158 | 4.0 | 0.256 | 6.5 |
| A-088-AP-2 | 0.331 | 8.4 | 0.421 | 10.7 | 0.189 | 4.8 | 0.313 | 8.0 | 0.394 | 10.0 |
| A-274-TC | 0.339 | 8.6 | 0.433 | 11.0 | 0.189 | 4.8 | 0.313 | 8.0 | 0.394 | 10.0 |
| A-273-AW | 0.343 | 8.7 | 0.500 | 12.7 | 0.169 | 4.3 | 0.197 | 5.0 | 0.295 | 7.5 |
| A-263-T | 0.346 | 8.8 | 0.457 | 11.6 | 0.228 | 5.8 | 0.158 | 4.0 | 0.213 | 5.4 |
| A-088-AP-4 | 0.346 | 8.8 | 0.417 | 10.6 | 0.185 | 4.7 | 0.327 | 8.3 | 0.406 | 10.3 |
| A-266-AW | 0.350 | 8.9 | 0.409 | 10.4 | 0.236 | 6.0 | 0.043 | 1.1 | 0.158 | 4.0 |
| A-250-AP | 0.354 | 9.0 | 0.421 | 10.7 | 0.197 | 5.0 | 0.197 | 5.0 | 0.276 | 7.0 |
| A-248-AP | 0.354 | 9.0 | 0.512 | 13.0 | 0.276 | 7.0 | 0.197 | 5.0 | 0.276 | 7.0 |
| A-188-AW | 0.358 | 9.1 | 0.512 | 13.0 | 0.161 | 4.1 | 0.197 | 5.0 | 0.276 | 7.0 |
| A-064-AR | 0.362 | 9.2 | 0.472 | 12.0 | 0.209 | 5.3 | 0.276 | 7.0 | 0.394 | 10.0 |
| A-105-TC | 0.362 | 9.2 | 0.433 | 11.0 | 0.224 | 5.7 | 0.269 | 6.8 | 0.339 | 8.6 |
| A-251-AP | 0.366 | 9.3 | 0.437 | 11.1 | 0.200 | 5.1 | 0.269 | 6.8 | 0.331 | 8.4 |
| A-035-AW | 0.375 | 9.5 | 0.500 | 12.7 | 0.185 | 4.7 | 0.248 | 6.3 | 0.374 | 9.5 |
| A-056-TC | 0.374 | 9.5 | 0.472 | 12.0 | 0.248 | 6.3 | 0.328 | 8.3 | 0.413 | 10.5 |
| A-242-TC | 0.382 | 9.7 | 0.472 | 12.0 | 0.244 | 6.2 | 0.098 | 2.5 | 0.185 | 4.7 |
| A-267-AP | 0.386 | 9.8 | 0.472 | 12.0 | 0.276 | 7.0 | 0.244 | 6.2 | 0.323 | 8.2 |
| A-289-AP | 0.394 | 10.0 | 0.472 | 12.0 | 0.158 | 4.0 | 0.433 | 11.0 | 0.591 | 15.0 |
| A-254-AR | 0.394 | 10.0 | 0.472 | 12.0 | 0.217 | 5.5 | 0.276 | 7.0 | 0.394 | 10.0 |
| A-257-AP | 0.394 | 10.0 | 0.579 | 14.7 | 0.236 | 6.0 | 0.295 | 7.5 | 0.433 | 11.0 |
| A-230-AP-2 | 0.394 | 10.0 | 0.472 | 12.0 | 0.236 | 6.0 | 0.315 | 8.0 | 0.394 | 10.0 |
| A-062-AR | 0.394 | 10.0 | 0.551 | 14.0 | 0.276 | 7.0 | 0.119 | 3.0 | 0.199 | 5.0 |
| A-110-AR | 0.394 | 10.0 | 0.512 | 13.0 | 0.295 | 7.5 | 0.118 | 3.0 | 0.177 | 4.5 |
| A-169-AW | 0.413 | 10.5 | 0.532 | 13.5 | 0.335 | 8.5 | 0.157 | 4.0 | 0.315 | 8.0 |
| A-222-AW | 0.393 | 10.9 | 0.551 | 14.0 | 0.256 | 6.5 | 0.378 | 9.6 | 0.472 | 12.0 |
| A-182-AP | 0.469 | 11.9 | 0.606 | 15.4 | 0.299 | 7.6 | 0.292 | 7.4 | 0.404 | 10.3 |
| A-134-TC | 0.473 | 12.0 | 0.586 | 14.9 | 0.319 | 8.1 | 0.157 | 4.0 | 0.276 | 7.0 |
| A-231-AP | 0.492 | 12.5 | 0.591 | 15.0 | 0.280 | 7.1 | 0.158 | 4.0 | 0.236 | 6.0 |
| A-201-AR | 0.492 | 12.5 | 0.591 | 15.0 | 0.295 | 7.5 | 0.315 | 8.0 | 0.394 | 10.0 |
| A-066-AR | 0.492 | 12.5 | 0.630 | 16.0 | 0.315 | 8.0 | 0.236 | 6.0 | 0.315 | 8.0 |
| A-229-AP | 0.500 | 12.7 | 0.657 | 16.7 | 0.315 | 8.0 | 0.374 | 9.5 | 0.563 | 14.3 |
| A-012-AP | 0.500 | 12.7 | 0.625 | 15.9 | 0.347 | 8.8 | 0.281 | 7.1 | 0.406 | 10.3 |
| A-268-AW | 0.512 | 13.0 | 0.807 | 20.5 | 0.236 | 6.0 | 0.173 | 4.4 | 0.406 | 10.3 |
| A-239-TBR | 0.522 | 13.3 | 0.574 | 14.6 | 0.422 | 10.5 | 0.080 | 2.0 | 0.118 | 3.0 |
| A-283-AP | 0.547 | 13.9 | 0.630 | 16.0 | 0.394 | 10.0 | 0.158 | 4.0 | 0.236 | 6.0 |
| A-271-AW | 0.551 | 14.0 | 0.937 | 23.8 | 0.315 | 8.0 | 0.500 | 12.7 | 0.630 | 16.0 |
| A-272-AP-2 | 0.551 | 14.0 | 0.630 | 16.0 | 0.394 | 10.0 | 0.295 | 7.5 | 0.374 | 9.5 |
| A-272-AW | 0.563 | 14.3 | 0.748 | 19.0 | 0.386 | 9.8 | 0.331 | 8.4 | 0.465 | 11.8 |
| A-270-AW | 0.595 | 15.1 | 0.925 | 23.5 | 0.319 | 8.1 | 0.228 | 5.8 | 0.441 | 11.2 |
| A-135-TC | 0.602 | 15.3 | 0.768 | 19.5 | 0.381 | 9.7 | 0.394 | 10.0 | 0.535 | 13.6 |

