

# ORDER FORM - Yarn Sensor A303030

**ELDON**  
SPECIALTIES, INC.

PO Box 567 \* 821 E. Parker St. Ext.  
Graham, NC 27253 \* USA  
(336) 229-6622 \* Fax (336) 229-7180  
sales@eldonspecialties.com  
www.eldonspecialties.com

*Thank you for ordering A303030 Sensor.  
Please complete the following for options:*

**Quantity**

**pcs.**



**A303030-G**

## 1. Entrance / Exit Guide

**A) Guide** Part No. \_\_\_\_\_ **B) Guide** Part No. \_\_\_\_\_

**2. Pipe** (Optional) Ceramic pipe required? Yes / No

**3. Lead wire** (Optional) Lead wire required? **Yes / No**

If yes, please tick one box each:

**Length**  200 mm (standard)  \_\_\_\_\_ mm (if any other length)

### Connection

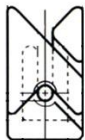
N/C (Normal Close) + C (common) (standard)

N/O (Normal Open) + C (common)

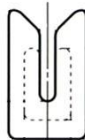
\*We recommend ordering with leads as they need soldering.

## OPTION LIST

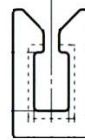
**B007020**  
Hook Guide YM99C



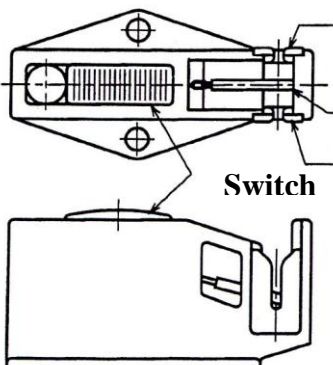
**N705067 2.0mm slit**  
Slit Guide YM99C



**N808029 4.5mm slit**  
Double Hook Guide  
YM99C



**N808055**  
Hook Guide M99C



*We have 4 type of guides for entry / exit guides (A and B).  
Standard is N705067+B007020*



*\*Option 2  
Pipe (A307061)*

*\*Option 3 Lead*